

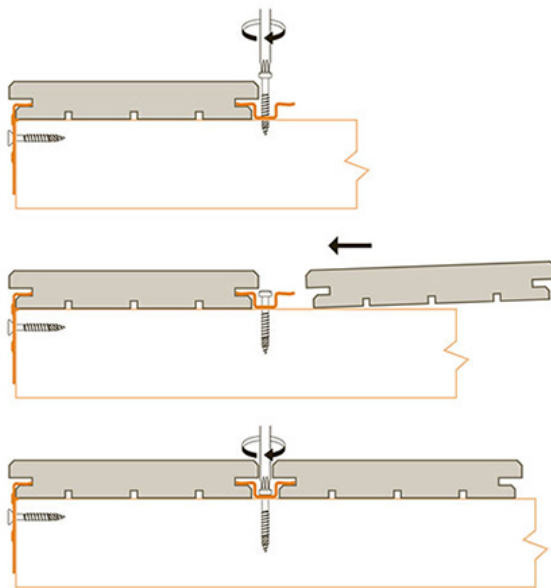
## B-Fix Clip system

(Ipé/Garapa/Afrikulu -Mukulungu FelixWood profiles)

Decking boards must be grooved according to the Bfix profile.

- Verify that the moisture content of the wood is in accordance with B-Fix recommendations.
- Double the joists under each board joint to allow good water drainage. Fasten each board at each joint with its own clip.
- Please take into account the distance between the joists (40 cm).
- spite of a correct installation, the junction line is sometimes irregular during the year.

To install your deck with B-Fix clips, follow these 4 steps:



**Step 1:** Align the first deck board to the end of the structure and fasten it. Slide the clip over the joist to insert a wing into the groove of the board's profile.

**Step 2:** Then screw the self-drilling screw into the clip hole to half the height of the groove. Do not screw it in completely to be able to slide the other board into the second wing of the clip.

**Step 3:** Slide a second board into the maximum and insert it into the second wing of the clip. Make sure that the boards are properly aligned.

**Step 4:** Tighten the clip screw to the maximum.

There are appropriate start/end clips for the beginning and end of the deck. The lower part of the clip should always be flush with the joist so that the clip fits perfectly and works with a forced fit.

## Other general information :

### Installation of the joists

The maximum span is 40 cm between joists (from center to center).

The joists must be installed with a 2% slope in the longitudinal direction of the boards to allow rainwater to run off. This 2% slope must be strictly observed!

Water must also be able to flow under the structure. The joists must be supported on rubber spacers or studs.

Protect your joists and increase their lifespan: Use the **Bitudeck** asphalt tape to cover the joists and prevent water infiltration at the fixing points.

For installation on aluminum joists, specific screws are required.

We recommend using 2 EPDM 2 spacer tapes between the clip (Art.No. 1720) to avoid breaking the screws.

Observe the information sheet of the respective wood type!